



Wetherby Millennium Stand Room Sizes

Room	Effective Area	Ceiling Height	Blackout	Max Occupancy		
				Theatre	Cabaret	Banqueting
Level 1 - Clifford Moor Suite (Ground Floor)	144 m ²	2.5m to 2.78m	✗	80	50	80
Level 2 - Marston Moor Suite (Upper Ground Floor)	215 m ²	2.63m to 2.89m	✓	200	80	120
Level 3 - White Rose Box (single)	23.2 m ²	2.47m to 2.68m	✓	20	-	20
Level 3 - White Rose Boxes (10 merged)	232 m ²	2.47m to 2.68m	✓	150	80	200
Level 3 - White Rose Suite	185.5 m ²	2.68m to 6m	✗	90	70	150
Level 3 - White Rose Exhibition Suite	456 m ²	2.47m to 6m	-	-	-	350
Level 4 - Box (single)	23.2 m ²	2.5m to 2.68m	✓	20	-	20
Level 4 - White Horse Suite	85 m ²	2.47m to 2.68m	✗	50	40	60
Level 1 - Foyer	56 m ²	2.68m	-	-	-	-
Level 2 - Foyer	70 m ²	2.68m	-	-	-	-
Level 3 - Foyer	48 m ²	2.68m	-	-	-	-
Level 4 - Foyer	48 m ²	2.68m	-	-	-	-

NOTES:

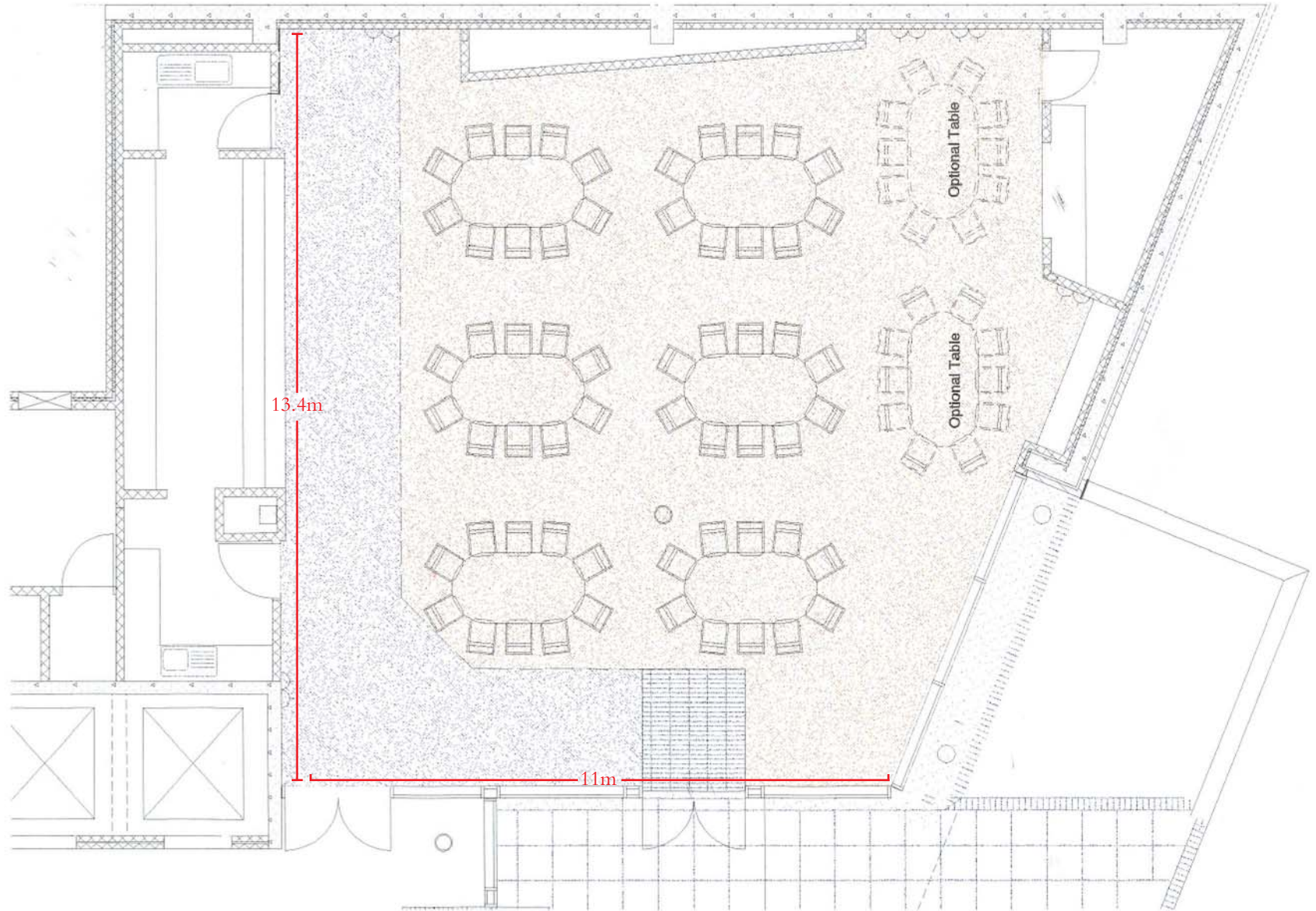
There are wide stairwells, lift access and toilet facilities (including facilities for the disabled) on all levels of the Wetherby Millennium Stand

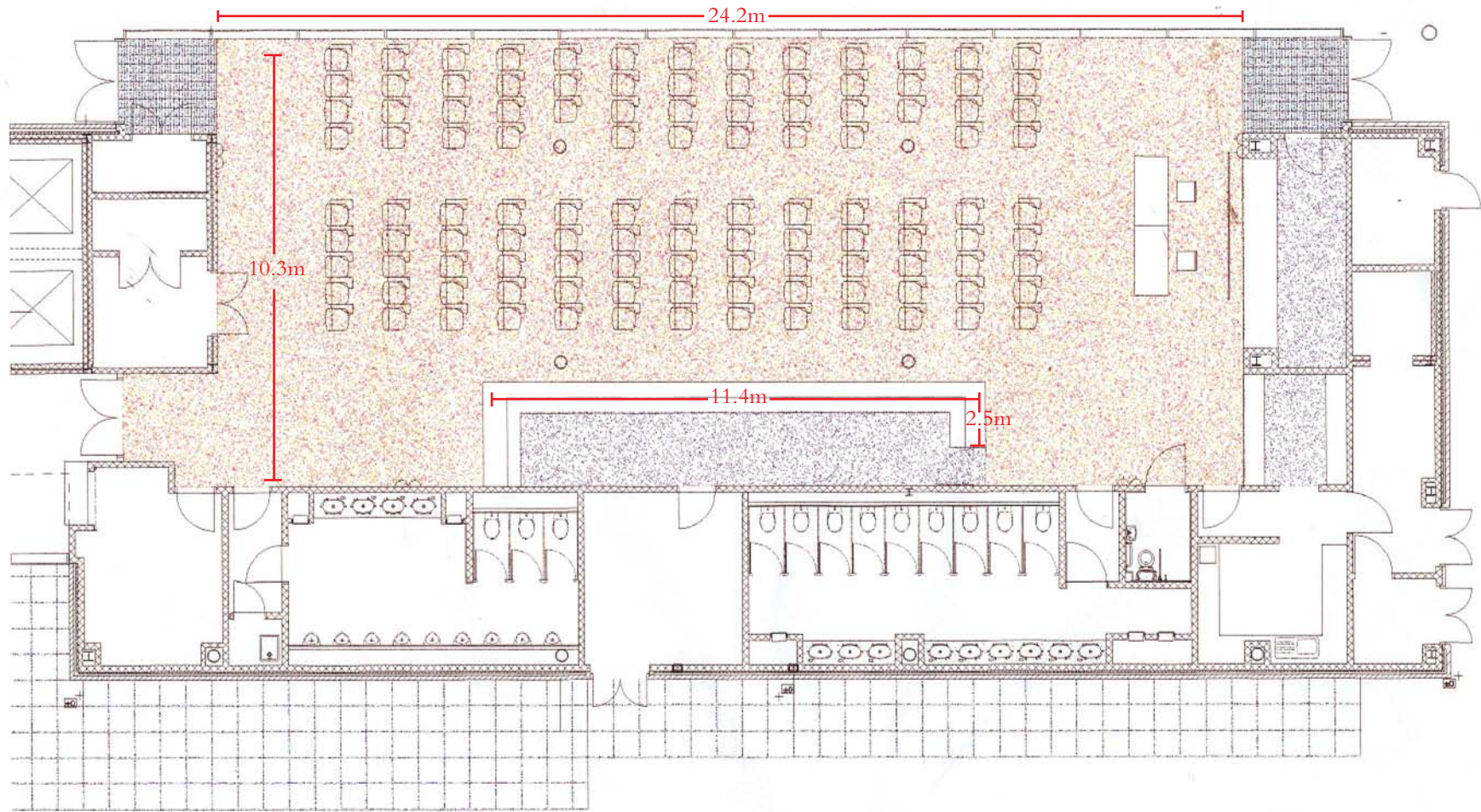
Level 3 Box Suites all have sliding/folding walls to allow a wide degree of flexibility on room sizes

Level 3 Box Suites and White Rose Suite merge to create an exhibition space of 456 m²

Level 4 has 10 syndicate suites that are identical in size to that of the White Rose Boxes on level 3. The syndicate suites on level 4 do not have sliding/folding walls

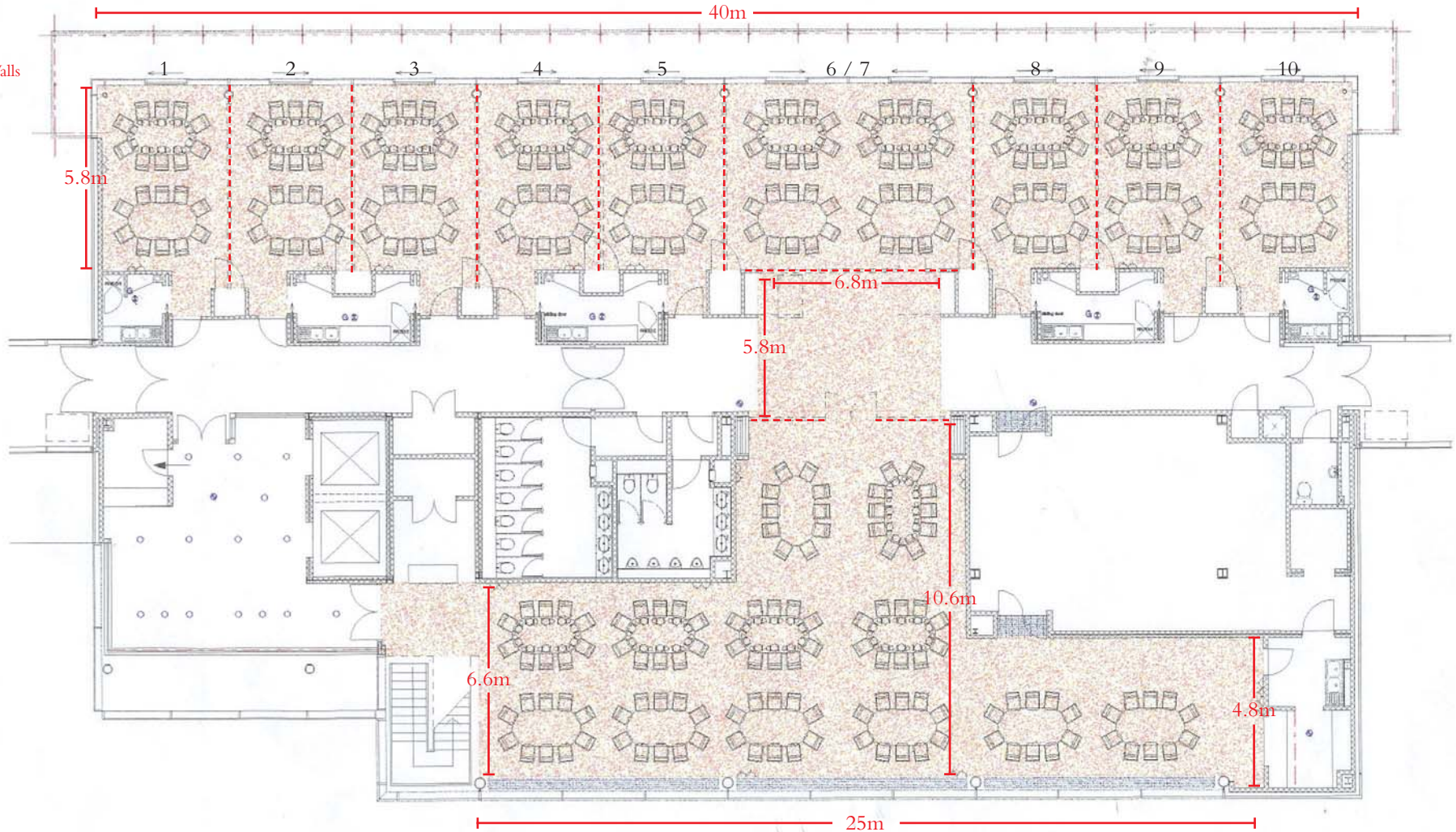
Plans attached are not drawn to scale and dimensions quoted are approximate





White Rose Boxes

- - - - - Sliding/Folding Walls



White Rose Suite

Level 4 also has a further 10 individual syndicate suites of an identical size to the White Rose Boxes on Level 3

